

Research and Knowledge Exchange Conference
University of East London, 27th June 2019



50
YEARS

Promoting epistemic justice through knowledge exchange

Professor Richard Holliman

OU Academic Lead for Engaged Research

open.ac.uk/blogs/per



50
YEARS

INAUGURAL LECTURES



OUR
MISSION

OUR
VISION

OUR
VALUES

open to:

- people
- places
- methods
- ideas

increase reach

- teaching
- research
- KE
- PSB+/OERs

social justice

- inclusive
- innovative
- responsive
- responsible

A progressive agenda for engagement



1. Everyone has the opportunity to participate in R&I
2. Researchers and innovators know why, when and how to actively involve people in their work and are supported and incentivised to do so
3. Young people feel empowered to participate in R&I
4. Society plays an active role in shaping the direction of R&I

Normative

addressing
epistemic
injustice

Substantive

improving
research
quality

Instrumental

value for
money;
sustainability



Fairness in Knowing: Science Communication and Epistemic Justice

Fabien Medvecky¹ 



The Open
University

50
YEARS

“...whether science communicators acknowledge it or not, they get to decide both which knowledge is shared (by choosing which topic is communicated), and who gets access to this knowledge (by choosing which audience it is presented to). As a result, the decisions of science communicators have important implications for epistemic justice: how knowledge is distributed fairly and equitably.”

EPISTEMIC INJUSTICE

Power & the Ethics of Knowing

MIRANDA FRICKER

Epistemic injustice

“...there is a distinctively epistemic type of injustice, in which someone is wronged specifically in their capacity as a knower.”

[Fricker, 2007](#)



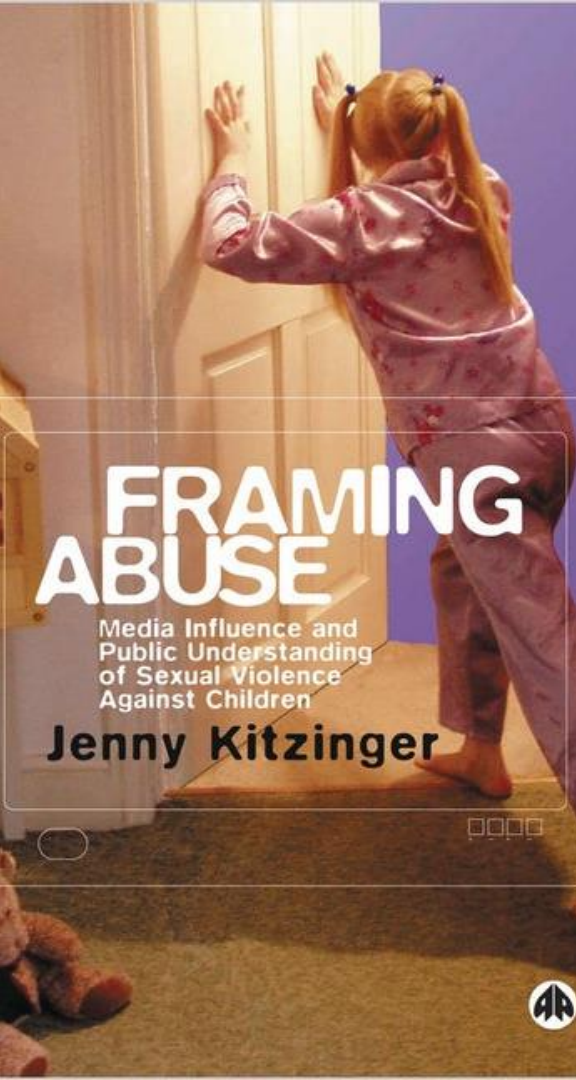
The Open
University

50
YEARS

Hermeneutical Injustice

“...stemming from a gap in collective
hermeneutical resources – a gap, that
is, in our shared tools of
interpretation...”

[Fricker, 2007: 6](#)



Young Commissioners

Darren Sharpe, Angela Harden, Emma Green

“In this presentation we will describe the impact of the research we have undertaken to develop and test a young commissioner’s model which empowers young people to actively participate in the commissioning of health and social care services. As well as building resilience amongst young commissioners...”



Media coverage of cloning: a study of media content, production and reception



“...a speaker suffers testimonial injustice
[...] if prejudice on the hearer’s part
causes him [her] to give the speaker less
credibility than [s]he would otherwise
have given”.

Fricker, 2007: 4

Developing and investigating a participatory radio intervention

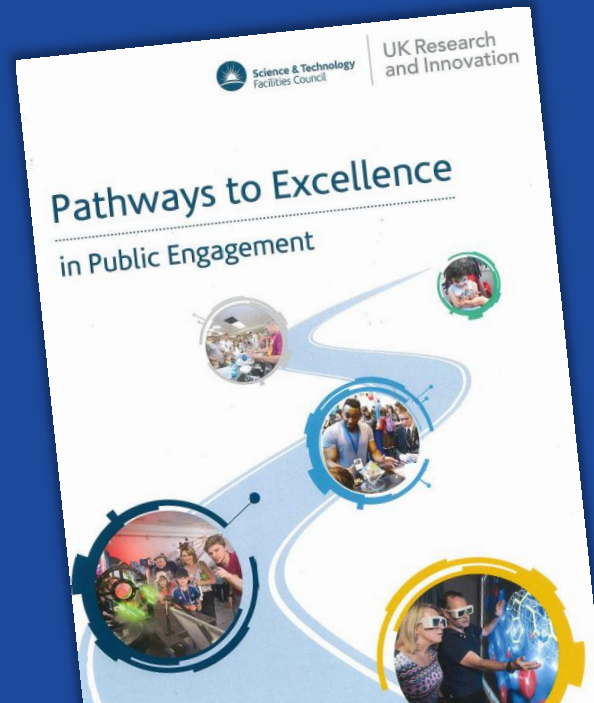
Tom Gerken

“Previous research in the area of participatory media has shown that the whole performative space of participatory radio can support the inclusion, non-formal learning and employability of socially excluded groups.”

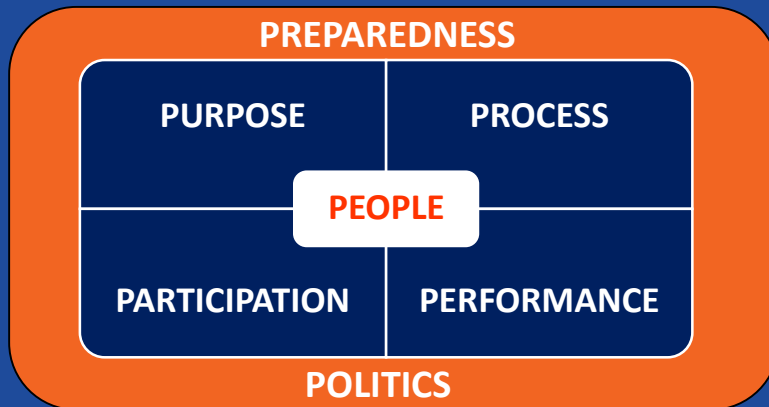
The importance of high-quality planning

“We just did our [...] grant.
I wrote the Ptol section.
I consulted no one, and I did it
in about two hours and that
included a coffee break.
I think I pretty much wrote it
off the top of my head.”

(Principal Investigator)



Engaged Research Design



Holliman et al. 2017



A strategy for creating publics

Designing public-centric
forms of public engagement
with research

- targeting ‘publics’ through representation
- the role of ‘publics’ in research
- public self-organisation

Mahony, 2015

Tower Bridge: poetry, the community & the spectacle

Anna Robinson

“I have been working with other artists and local residents; dancers, performance artists and residents of a local care-home in Bermondsey. The event [...] will be open to local residents and tourists alike, thus will have two different types of audience with differing senses of ownership on the stories and images presented.”

Looking forward to today



- Linking our mission, vision and values
- A progressive agenda for engagement
- Engaged Research Design
- Engaging Research:
www.open.ac.uk/blogs/per



50.open.ac.uk