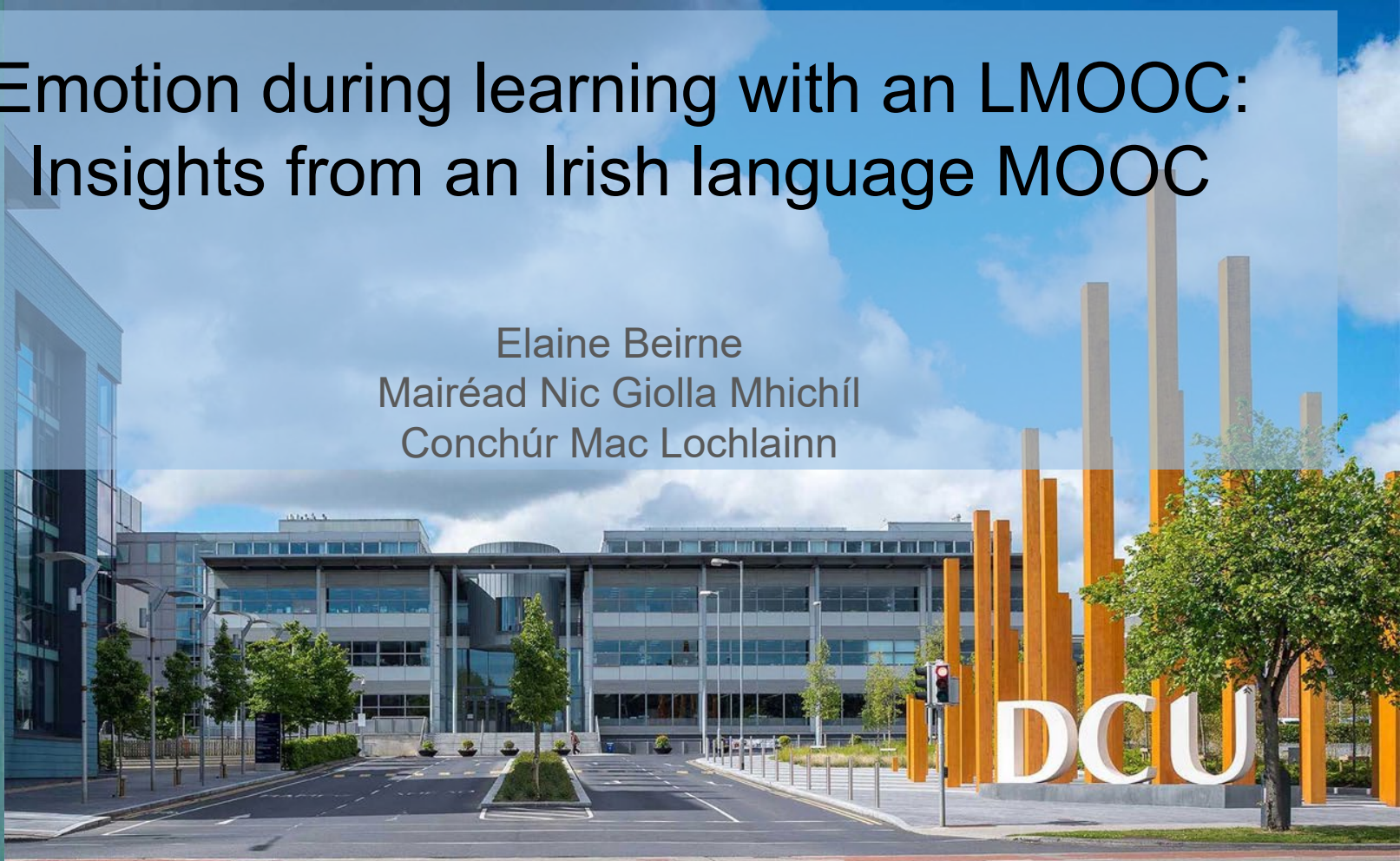


# Emotion during learning with an LMOOC: Insights from an Irish language MOOC

Elaine Beirne  
Mairéad Nic Giolla Mhichíl  
Conchúr Mac Lochlainn



S20

STRAITÉIS 20 BLIAIN DON  
GHAEILGE 2010-2030  
Ár dTeanga, Ár bPobal



National  
Lottery



An Roinn Cultúir,  
Oidhreacht agus Gaeltachta  
Department of Culture,  
Heritage and the Gaeltacht



NIDL  
National Institute  
for Digital Learning

*“Without emotions...little  
learning would take place”*

*Dewaele 2015*



# What do we want to know?

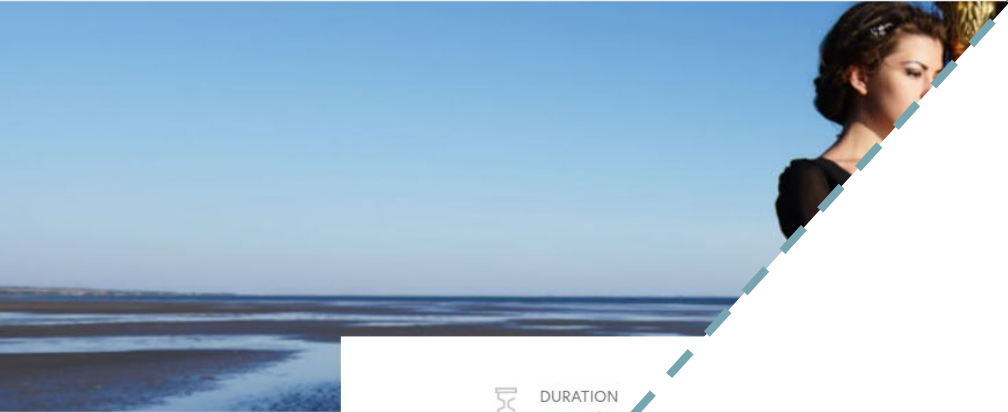
1. What emotions do students experience in an LMOOC?
2. How do these emotions change over the duration of the course?
3. Is there a relationship between task-type and learner-reported emotion?

ONLINE COURSE

# Irish 101: An Introduction to Irish Language and Culture

Get an introduction to Ireland's culture by learning the basics of the Irish language.

Overview Topics St



DURATION  
4 weeks

## By the numbers...

3	Weeks
4	Hours per week
135	Countries
10,645	Enrolled
2,931	Respondents

# Experience Sampling

*How are you feeling now?*

The capturing of experiences—such as events, behaviors, feelings, or thoughts—at the moment of, or close to, their occurrence, and within the context of a person's everyday life.

# Experience Sampling

*How are you feeling now?*

The **capturing of experiences**—such as events, behaviors, feelings, or thoughts—at the moment of, or close to, their occurrence, and within the context of a person's everyday life.



# Experience Sampling

*How are you feeling now?*

The capturing of experiences—such as events, behaviors, feelings, or thoughts—**at the moment of**, or close to, their occurrence, and within the context of a person's everyday life.

# Experience Sampling

*How are you feeling now?*

The capturing of experiences—such as events, behaviors, feelings, or thoughts—at the moment of, or close to, their occurrence, and **within the context of a person's everyday life.**

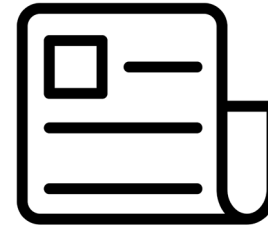


# Experience Sampling

*How are you feeling now?*

- Reduces retrospective bias
- Improves Ecological validity
- Increases statistical power
- Facilitates *within-person* investigations

# Event-Contingent Sampling



### Can you help us?

Dublin City University (DCU) is investigating the emotional experiences of learners whilst learning the Irish language online. This research will inform the design of our future Irish language courses. This is an optional study that you can take part in. Findings will be published as part of academic and doctoral research by the course educators. The use of survey data adheres to Dublin City University's [stringent ethical research practices](#), and the privacy of respondents will be respected and protected according to DCU's [Data Protection Policy](#). Institutional ethical approval was received: 03/01/2018.

[Click here to complete survey 1](#)

This study is being undertaken independently by Dublin City University to enhance the learner experience. Your participation in the research will have no effect on your course progress, marks or FutureLearn profile, and FutureLearn does not take responsibility for the contents or the consequences of your participation in the study.



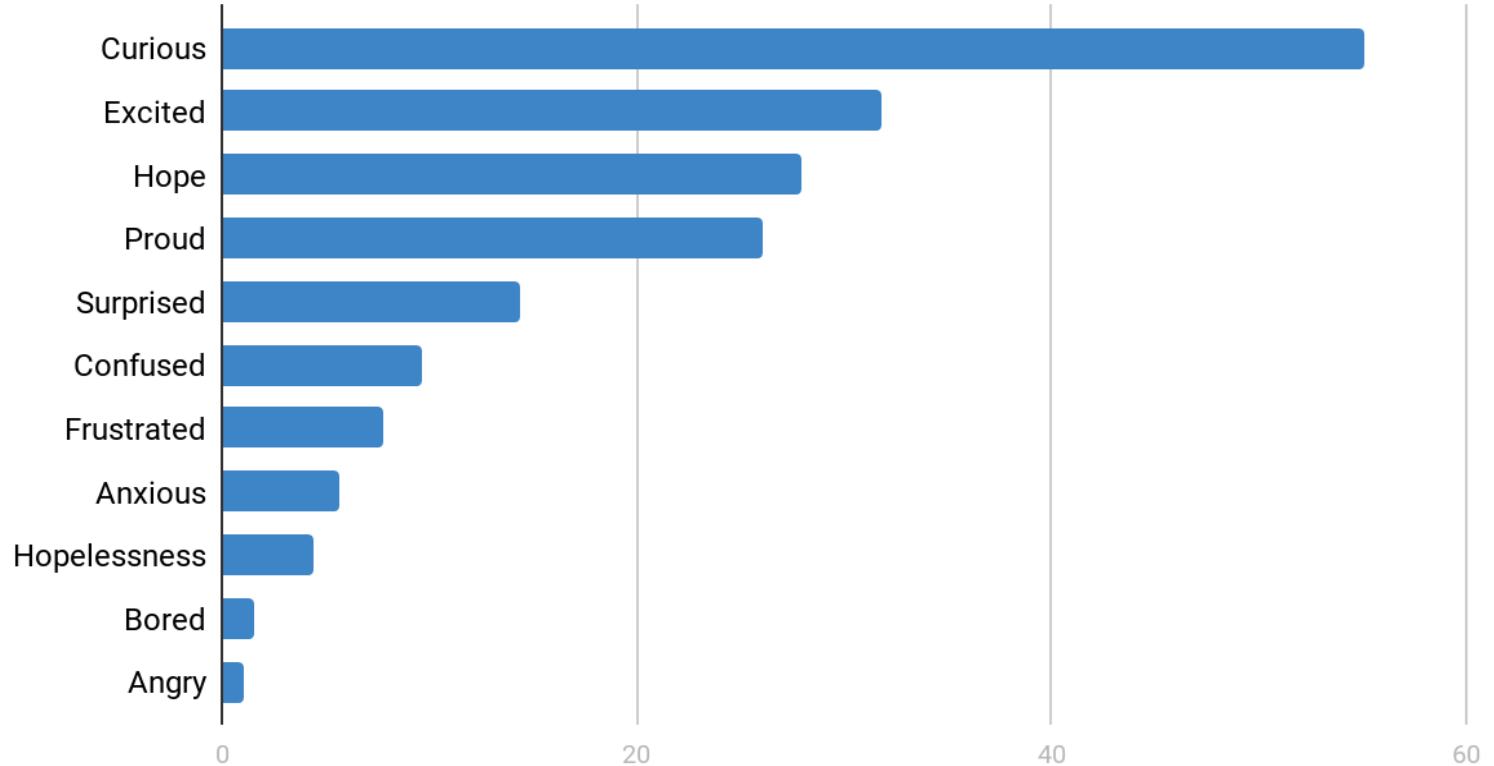


**How were you feeling while completing this quiz?**

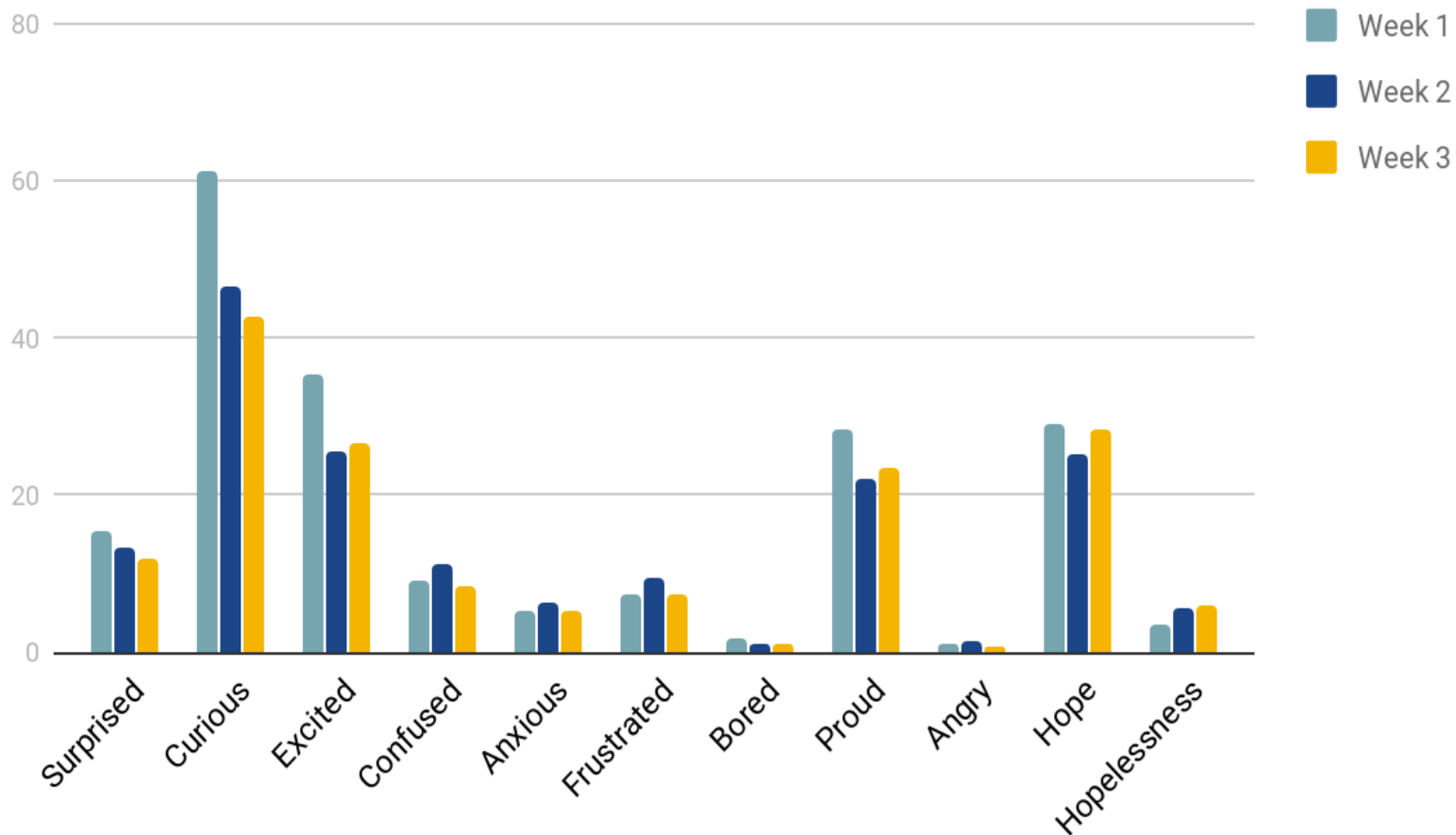
For each emotion, please indicate the strength of that emotion by clicking the point that best describes the intensity of your emotional experience during the learning activity.

	Not at all	Very Little	Moderate	Strong	Very Strong
Bored	<input type="radio"/>	<input type="radio"/>	<input type="radio"/>	<input type="radio"/>	<input type="radio"/>
Angry	<input type="radio"/>	<input type="radio"/>	<input type="radio"/>	<input type="radio"/>	<input type="radio"/>
Hope	<input type="radio"/>	<input type="radio"/>	<input type="radio"/>	<input type="radio"/>	<input type="radio"/>
Excited	<input type="radio"/>	<input type="radio"/>	<input type="radio"/>	<input type="radio"/>	<input type="radio"/>
Curious	<input type="radio"/>	<input type="radio"/>	<input type="radio"/>	<input type="radio"/>	<input type="radio"/>
Surprised	<input type="radio"/>	<input type="radio"/>	<input type="radio"/>	<input type="radio"/>	<input type="radio"/>
Confused	<input type="radio"/>	<input type="radio"/>	<input type="radio"/>	<input type="radio"/>	<input type="radio"/>
Frustrated	<input type="radio"/>	<input type="radio"/>	<input type="radio"/>	<input type="radio"/>	<input type="radio"/>
Anxious	<input type="radio"/>	<input type="radio"/>	<input type="radio"/>	<input type="radio"/>	<input type="radio"/>
Hopelessness	<input type="radio"/>	<input type="radio"/>	<input type="radio"/>	<input type="radio"/>	<input type="radio"/>
Proud	<input type="radio"/>	<input type="radio"/>	<input type="radio"/>	<input type="radio"/>	<input type="radio"/>

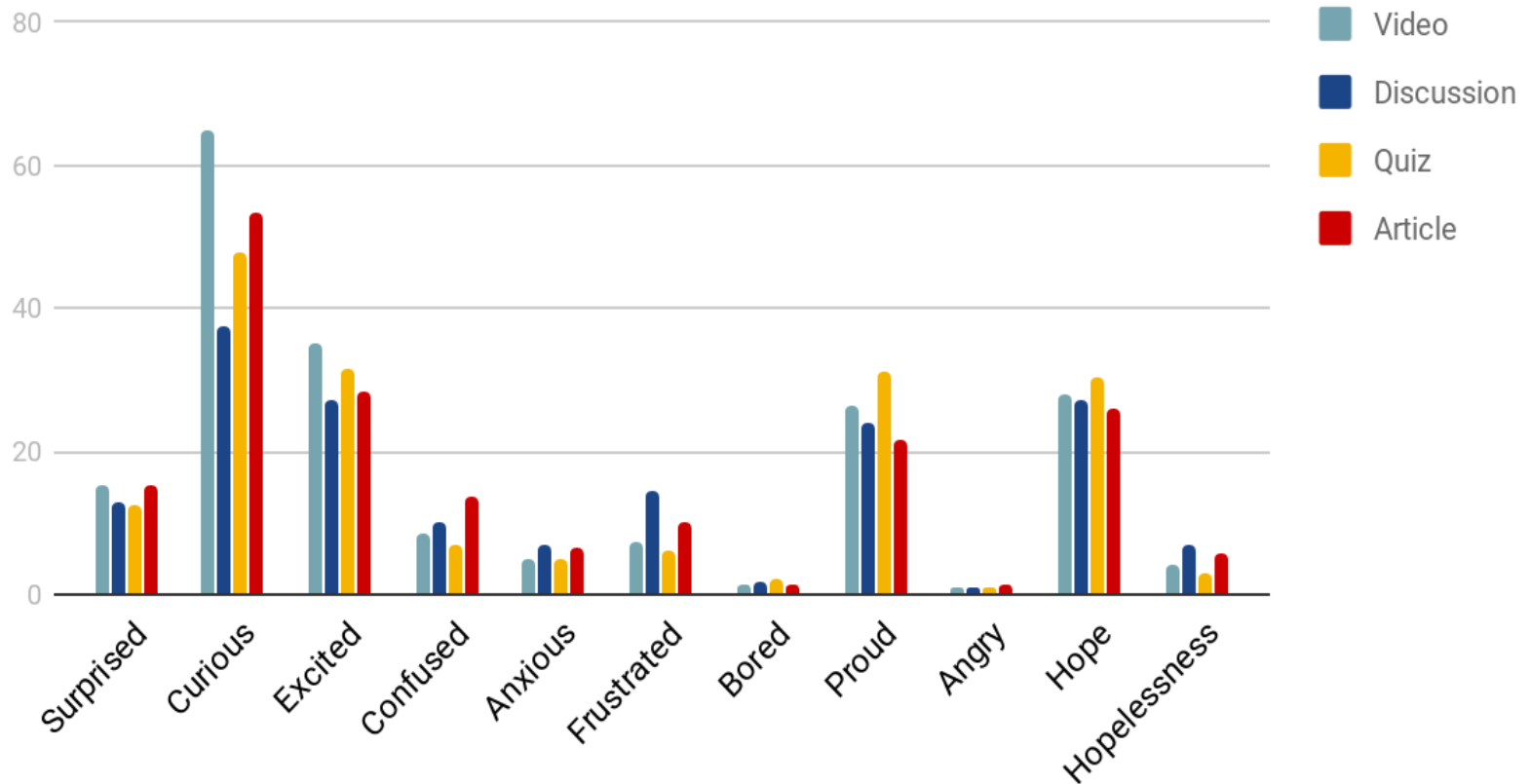
## What emotions do students experience in an LMOOC?



## How do these emotions change over the duration of the course?



# What is the relationship between task-type and learner-reported emotion?





# Next Steps...

Qualitative Diaries

Learning Manager Tool

Control-Value Theory of Emotions

Emotion Antecedents

Dublin

2019 Conference



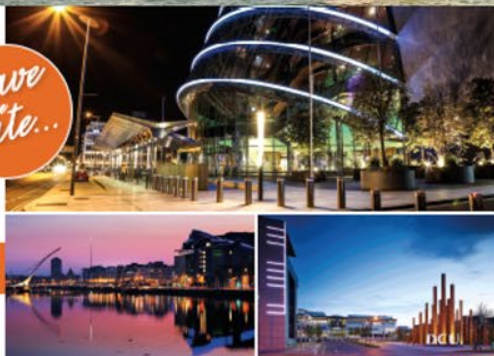
28<sup>th</sup> ICDE World Conference  
4-7 November 2019  
Convention Centre Dublin, Ireland

## World Conference on Online Learning

*Transforming Lives & Societies*

[www.WCOL2019.ie](http://www.WCOL2019.ie)

*Save  
the  
Date...*



INTERNATIONAL  
COUNCIL FOR OPEN AND  
DISTANCE EDUCATION

HOSTED BY DUBLIN  
CITY UNIVERSITY



 **NIDL**  
National Institute  
for Digital Learning

# Go raibh maith agaibh!

@elaine\_beirne

elaine.beirne4@mail.dcu.ie



An Roinn Cultúir,  
Oidhreacht agus Gaeltachta  
Department of Culture,  
Heritage and the Gaeltacht

**S20**

STRAITÉIS 20 BLIAIN DON  
GHAEILGE 2010-2030  
Ár dTeanga, Ár bPobal

