

# Micro-Credentials, National Projects & Industry

Caitríona Nic Giolla Mhichíl, Senior Project Manager  
Celine Heffernan, Senior Business Development Officer  
Microcredentials@DCU Studio, OVPAA  
DCU



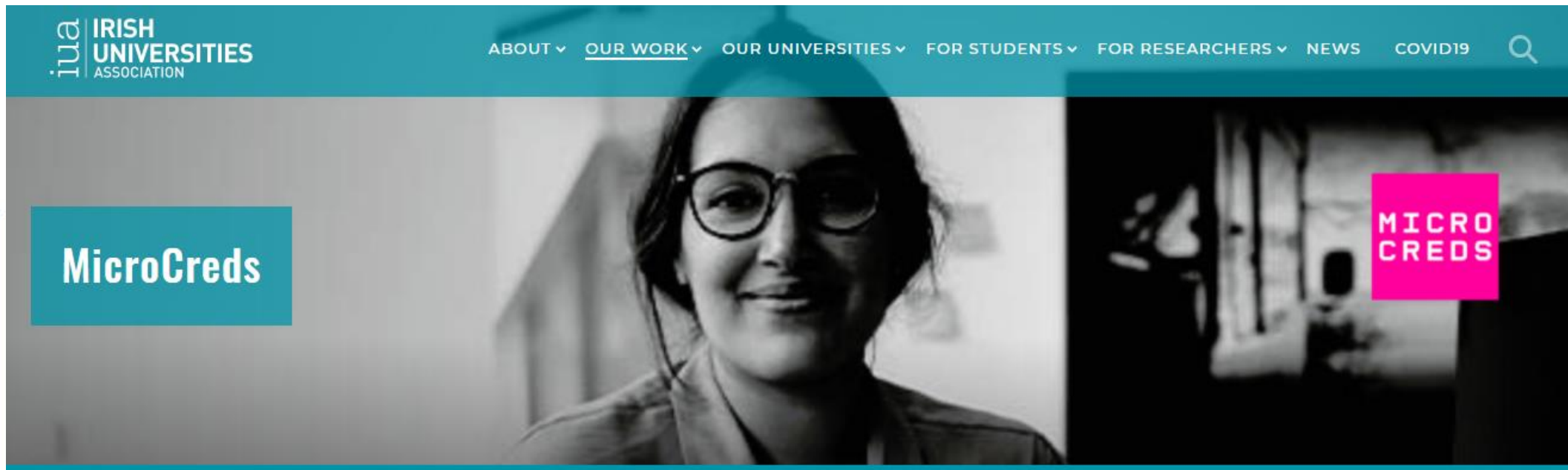
Ollscoil Chathair  
Bhaile Átha Cliath  
Dublin City University



# Why a National project?

- Joint National Initiative by Irish Universities by IUA
- Irish National Training Fund
- Upskilling & reskilling the Irish workforce
- European Agenda, Roadmap & Working Definition
- Response to changing learner needs

# National Project



**Strand 1:** Development of a National Framework for micro-credentials.

**Strand 2:** Creation of a dynamic and sustainable model of Enterprise Engagement for micro-credentials.

**Strand 3:** Design and development of a digital Discovery Platform for accredited micro-credentials, linked to a digital credentialing solution. The on-line portal will drive awareness of, and support learner access to micro-credentials and stacked micro-credential pathways.

**Strand 4:** Agilely developed and flexibly-delivered suite of micro-credentials across the partner universities.



Ollscoil Chathair  
Bhaile Átha Cliath  
Dublin City University

# First DCU Micro-Credential (FinTech) launched as a pilot in October 2020.

## Online Courses



### Introduction to FinTech - Financial Innovation BS601a

Introduces the key topics and explores the opportunities FinTech offers to enhance financial products. (Hours per week indicative)

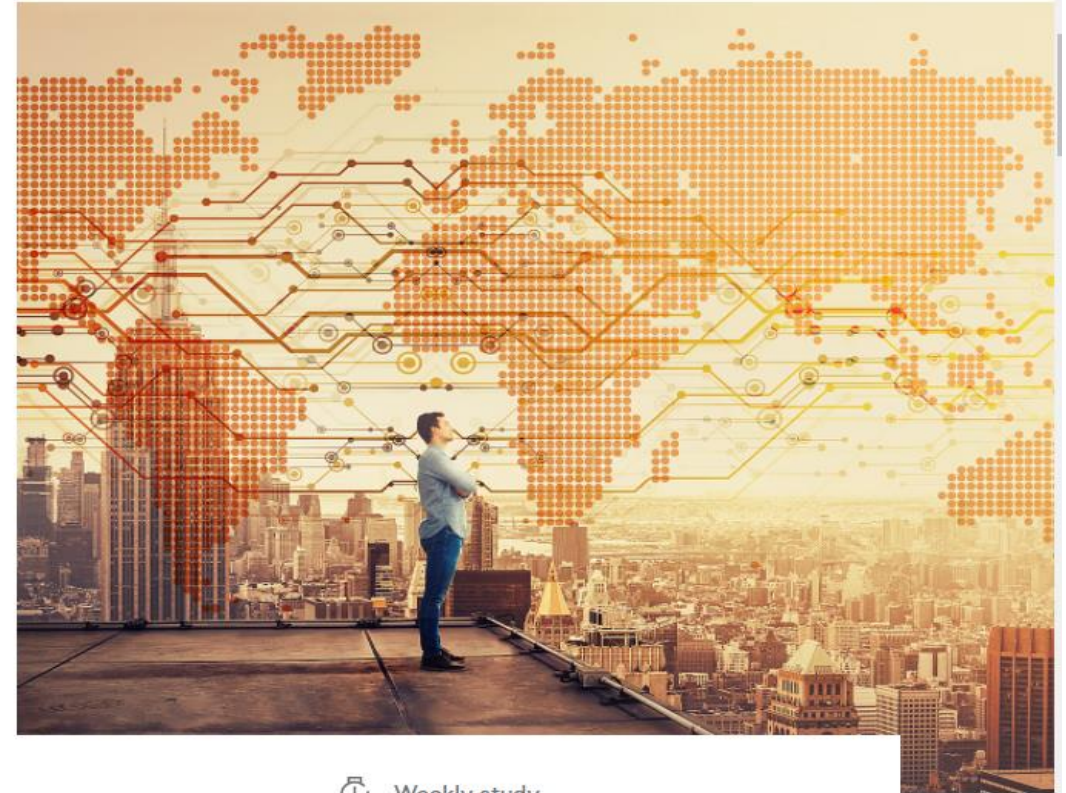
[Go to course](#)



Duration  
1 week



Weekly study  
0 hours



[Support](#)



Ollscoil Chathair  
Bhaile Átha Cliath  
Dublin City University



*“A micro-credential is a **proof** of the **learning outcomes** that a learner has acquired following a **short learning** experience. These learning outcomes have been **assessed** against transparent standards.” - EC (2020, p.10).*



Ollscoil Chathair  
Bhaile Átha Cliath  
Dublin City University

# Key Challenges for Industry & HE

- Timeframe
- Higher education vs Training
- Notion that this is an on demand model
- Rapid MC development? Is this realistic?
- Where does expertise sit in bespoke areas?

# Next Steps

- University-wide awareness and consultation regarding new and redesigned offerings
- Mainstreaming existing provision in alignment with DCU Micro-Credential Framework
- Implementing Industry Engagement Models

Go raibh maith agaibh/Thank you.